



# **CONFERENCE ROOMS**

## **GOLF & SPA RESORT KONOPIŠTĚ**



12

ENTRANCE

P

EXIT

PUBLIC COURSE

GOLF COURSES  
DRIVING RANGE

- |                                |                                 |                               |                             |                             |                         |
|--------------------------------|---------------------------------|-------------------------------|-----------------------------|-----------------------------|-------------------------|
| 1<br>Castle Hotel<br>201-305   | 2<br>Forest House<br>101-118    | 3<br>Garden House<br>601-606  | 4<br>Steak House<br>401-409 | 5<br>Creek House<br>501-526 | 6<br>Golf Houses<br>A-M |
| R<br>Golf & Hotel<br>Reception | 7<br>Steak House<br>St. Florian | 8<br>Restaurant<br>Tee Nr. 19 | 9<br>Rental<br>Service      | 10<br>Caddy<br>Room         | 11<br>Dressing<br>Room  |
|                                |                                 |                               |                             | 12<br>Wellness<br>& Spa     | 14<br>Congress<br>Hall  |

GOLF & SPA RESORT



KONOPIŠTĚ

The Golf & Spa Resort Konopiště is the ideal place for organizing corporate and social events as it has the necessary facilities and equipment. In the resort are regularly organized various kinds of events - from training sessions, meetings, conferences, family days to educational events.

Besides several conference rooms, the resort offers hotel with 135 comfortable double rooms, a large wellness center (2,000 m<sup>2</sup>), two restaurants and two 18-hole golf courses. Guests of the resort can also visit nearby Konopiště Castle.

Golf & Spa Resort Konopiště is located in the village Tvoršovice not far away from Benešov. in good driving distance (about 50 km) from the center of Prague and 200 km from Brno.



Excellent accessibility from Prague with possibilities of parking.



A very calm area in nature. Accompanying activities are available.



Air conditioning on the resort premises



Variable premises fitted with the Internet connection.



Well-equipped premises, including the necessary technology.



Two restaurants in the resort, offering specialties of European and Czech cuisines, buffet parties



Hotel with yearround operation with 135 comfortable rooms.



Indoor and outdoor swimming pools, steam, sauna and relaxation zone



Balneo offers massages, baths, wraps, inhalations, etc.

We will be glad to prepare a tailor-made offer for organisation of your events and we will show you round our resort. Do not hesitate and contact us.

Petr Kunc | tel.: 317 784 044 | mob. 602 130 688 | p.kunc@gcko.cz  
Golf Konopiště a.s. | Tvoršovice 27, 256 01 Benešov | www.gcko.cz

## CONFERENCES AND TRAINING | LEASE OF PREMISES

The resort has several conference rooms suitable for various events and meetings. On this and following pages you will find their overview sorted from the largest to the smallest. The arrangement and variability of the premises will satisfy the most demanding clients.

### | CONGRESS HALL

The congress hall with a floor area of 400 m<sup>2</sup> is the largest conference room. It can be used as one unit in full capacity or divided by an acoustic wall into two smaller halls. The hall is equipped with air conditioning, background facilities and good acoustics – thanks to these features it is possible to use it not only for large congresses but also for dance performances. Access to the hall is through an anteroom with a floor area of 72 m<sup>2</sup>.



| CONGRESS HALL 1+2



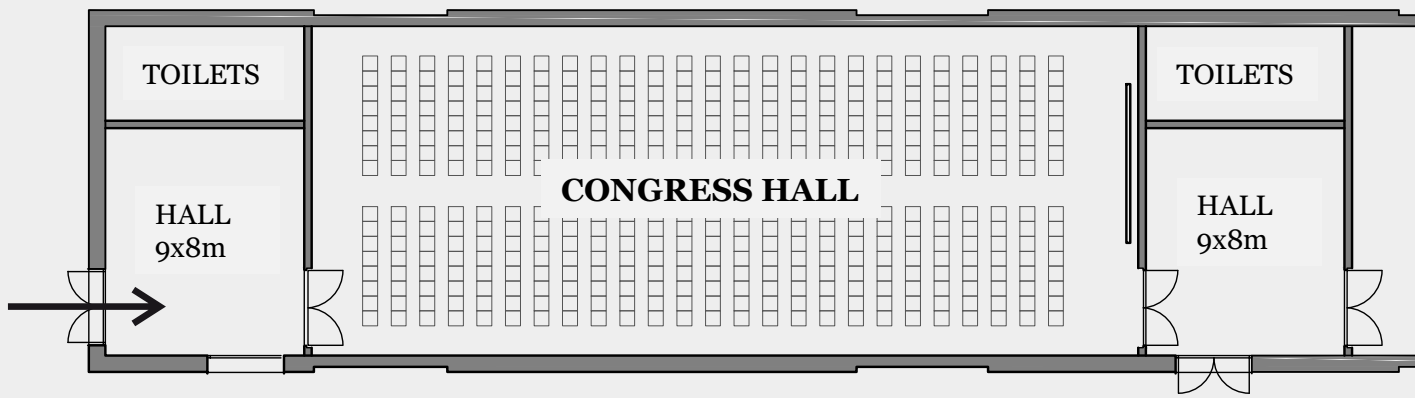
400 m<sup>2</sup>



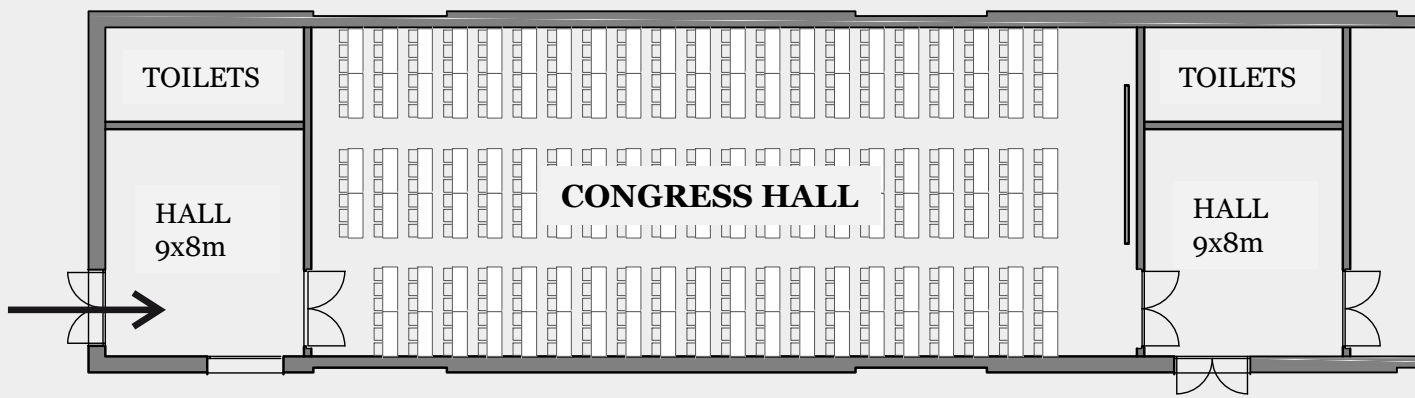
PROJECTOR  
SCREEN



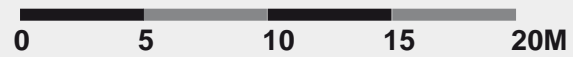
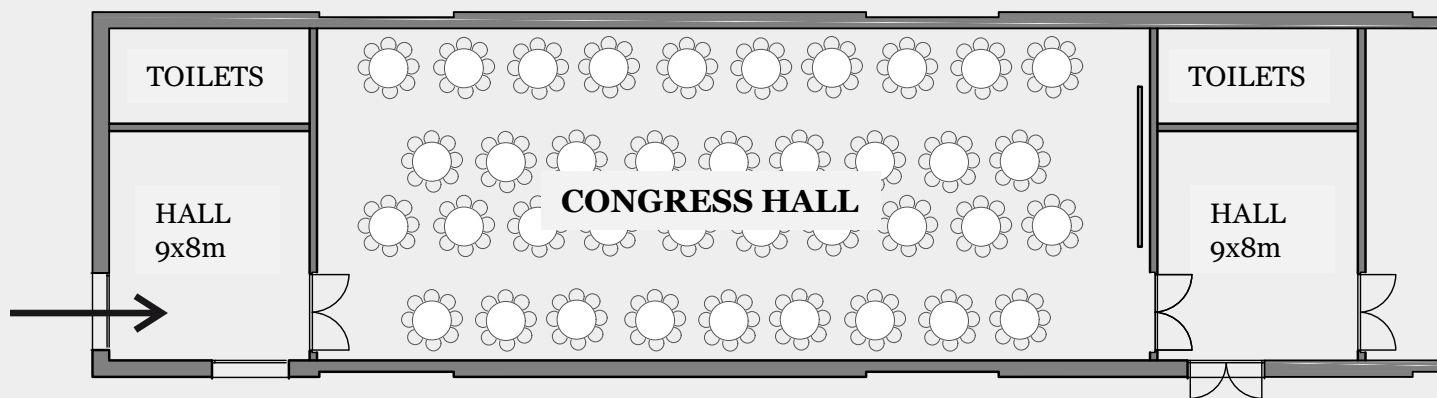
300 people



300 people



200 people



| CONGRESS HALL 1 or 2



190 people



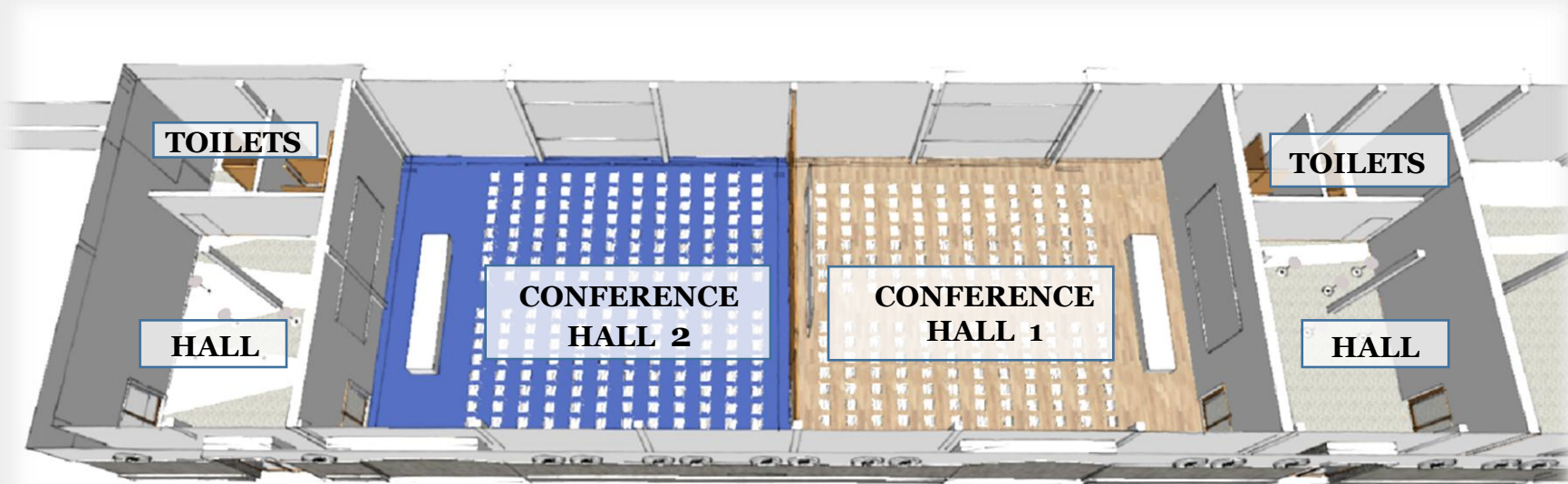
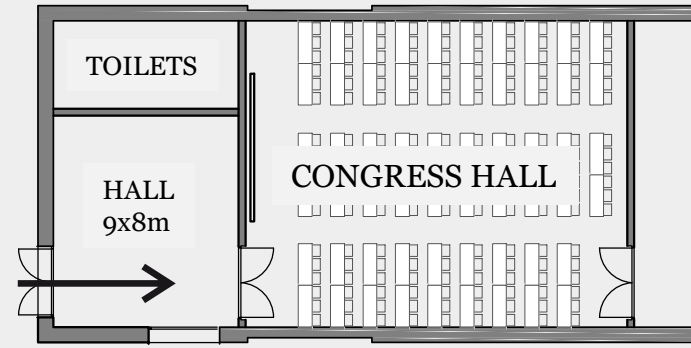
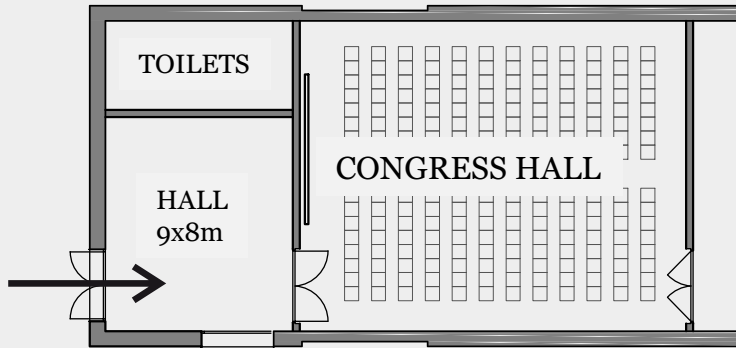
160 people



200 m<sup>2</sup>



PROJECTOR  
SCREEN



## | RADECKÝ HALL

Hall with a floor area of 130 m<sup>2</sup> is situated in a second floor of main building. It is perfect for seminars, workshops and other smaller events. Thanks to the „L” disposition it has a lot of possibilities of use and access. . Hall has a terrace and during the day is it pleasantly illuminated by daylight. The space is equipped with screen and projector.



AREA

**130 m<sup>2</sup>**



„THEATRE“

**110 people**



„SCHOOL“

**80 people**



„BANKET“

**90 people**



„U“

**45 people**

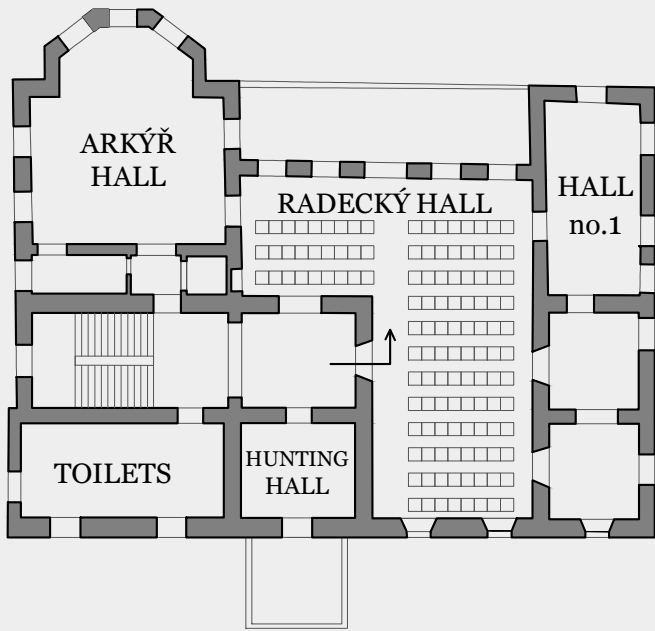


**PROJECTOR  
SCREEN**



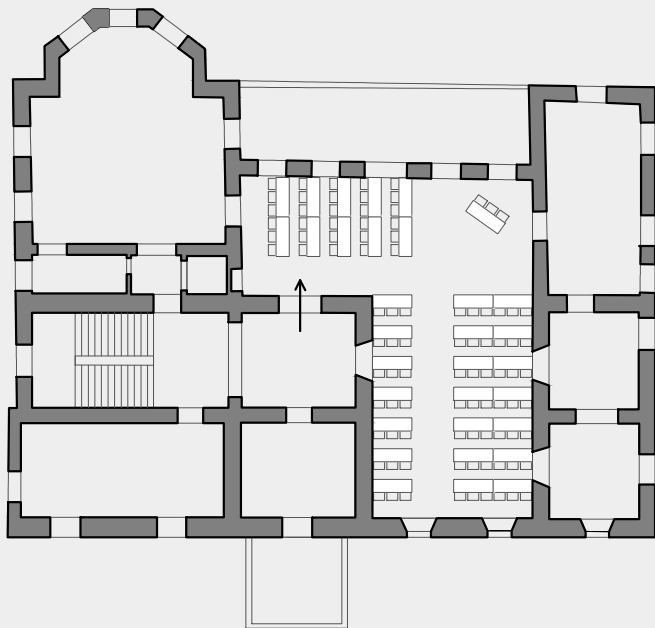
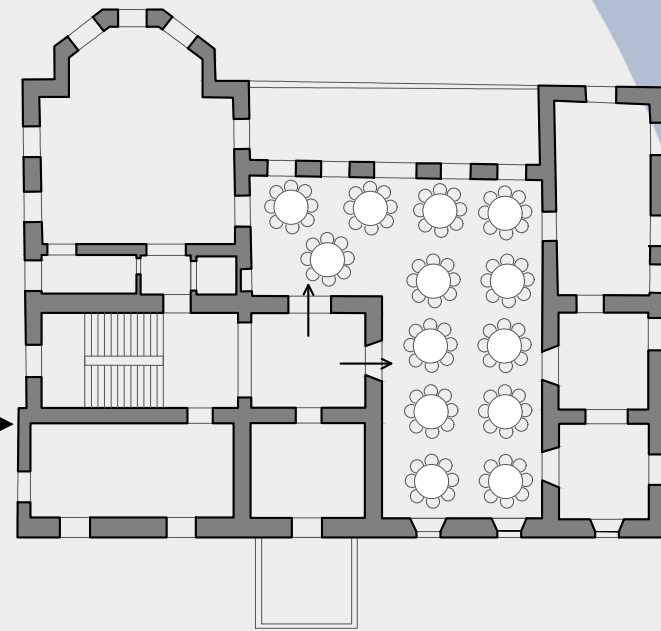
**TERRACE**





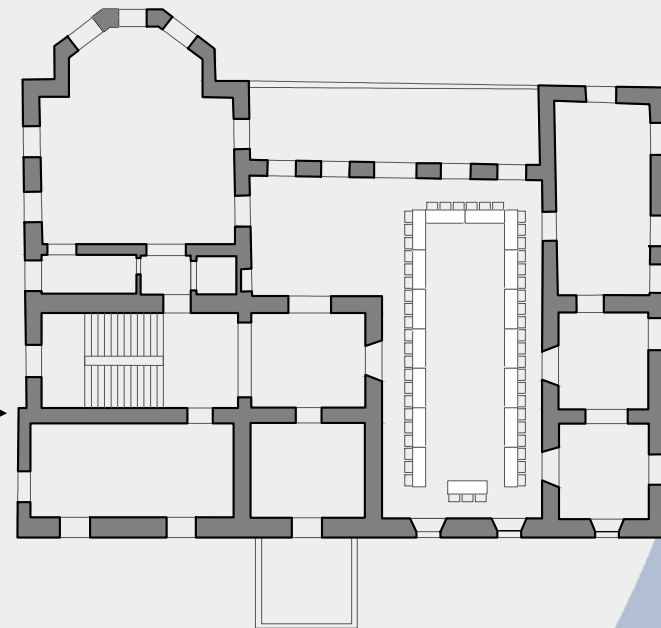
**„THEATRE“**  
110 people

**„BANQUET“**  
90 people



**„SCHOOL“**  
80 people

**„U SHAPE“**  
45 people





## | OTHER LOUNGES

### ARKÝŘOVÝ HALL

Hall with a floor area of 80m . It situated in a second floor of main building. The hall is illuminated by daylight. It is perfect for smaller seminars, workshops and others. Hall has a terrace. It is possible use a screen and a projector.



AREA

**80 m<sup>2</sup>**



„THEATRE“

**65 people**



„SCHOOL“

**50 people**



„BANQUET“

**60 people**



„U“

**25 people**



**PROJECTOR  
SCREEN**

### LOUNGE NO.1

Thanks to the small area 34m<sup>2</sup> is this lounge perfect for meetings or workshops. Hall is illuminated by daylight and it is possible to use a screen and a flip chart. Hall can be rented as a background for Radecký hall.



AREA

**34 m<sup>2</sup>**



„THEATRE“

**30 people**



„SCHOOL“

**25 people**



**PROJECTOR  
SCREEN**

### HUNTING LODGE

Hunting lodge with a floor area 18 m<sup>2</sup> is perfect for small meetings or workshops. Lounge is connected to a terrace and it's illuminated by daylight. It is possible to use a screen and a flip chart.



AREA

**18 m<sup>2</sup>**



„ROUND  
TABLE“

**10 people**



**PROJECTOR  
SCREEN**



**TERRACE**

## SERVICES

To achieve successful events, the resort is also equipped with additional equipment. The resort includes two restaurants, hotel, Spa & Wellness and other accompanying activities for spending time between various meetings.



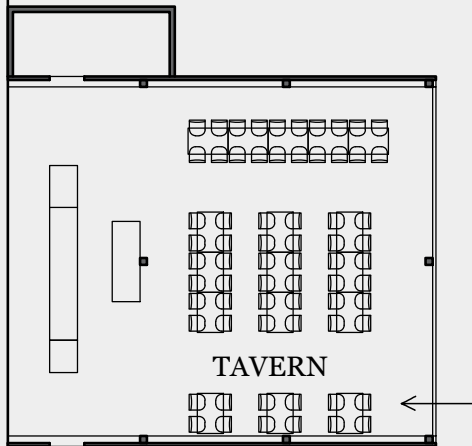
### | RESTAURANTS

There are two restaurants in the resort, namely Tee no. 19 and Steak House St. Florian. We offer meals of traditional Czech as well as international cuisine.

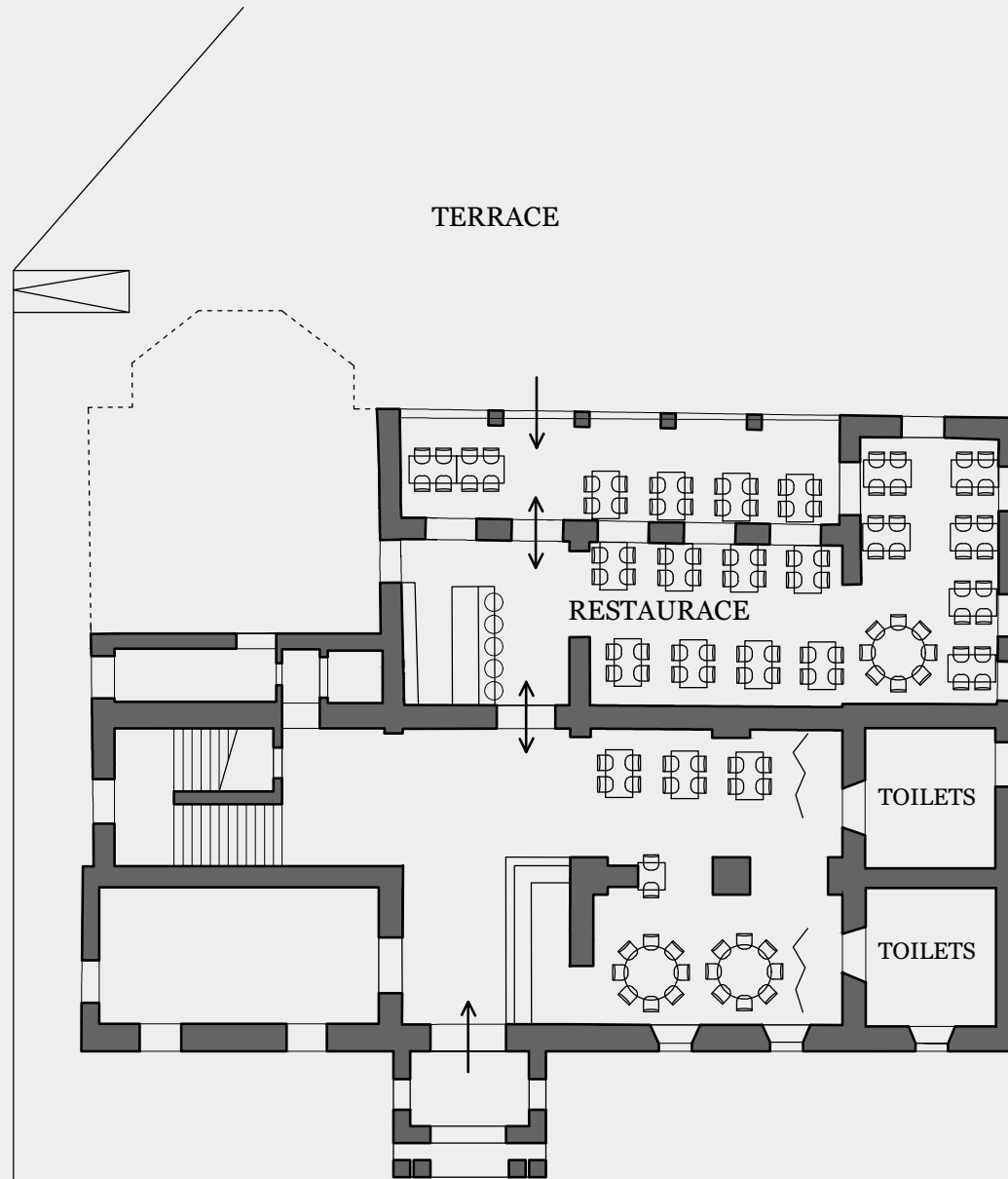
Catering for large groups is served by way of a buffet party on the premises of both the restaurants, thanks to which all participants can choose comfortably according to their preferences. The offer includes breakfasts, lunches, coffee breaks, dinners as well as various events focused on special topics. For small groups it is possible to ensure a-la-carte choice or a choice from an offer agreed upon beforehand. After a mutual agreement it is possible to serve small refreshment directly on the premises where the events are held.



**| Tee no. 19**



PLAYGROUND



**100 people  
(RESTAURANT)**

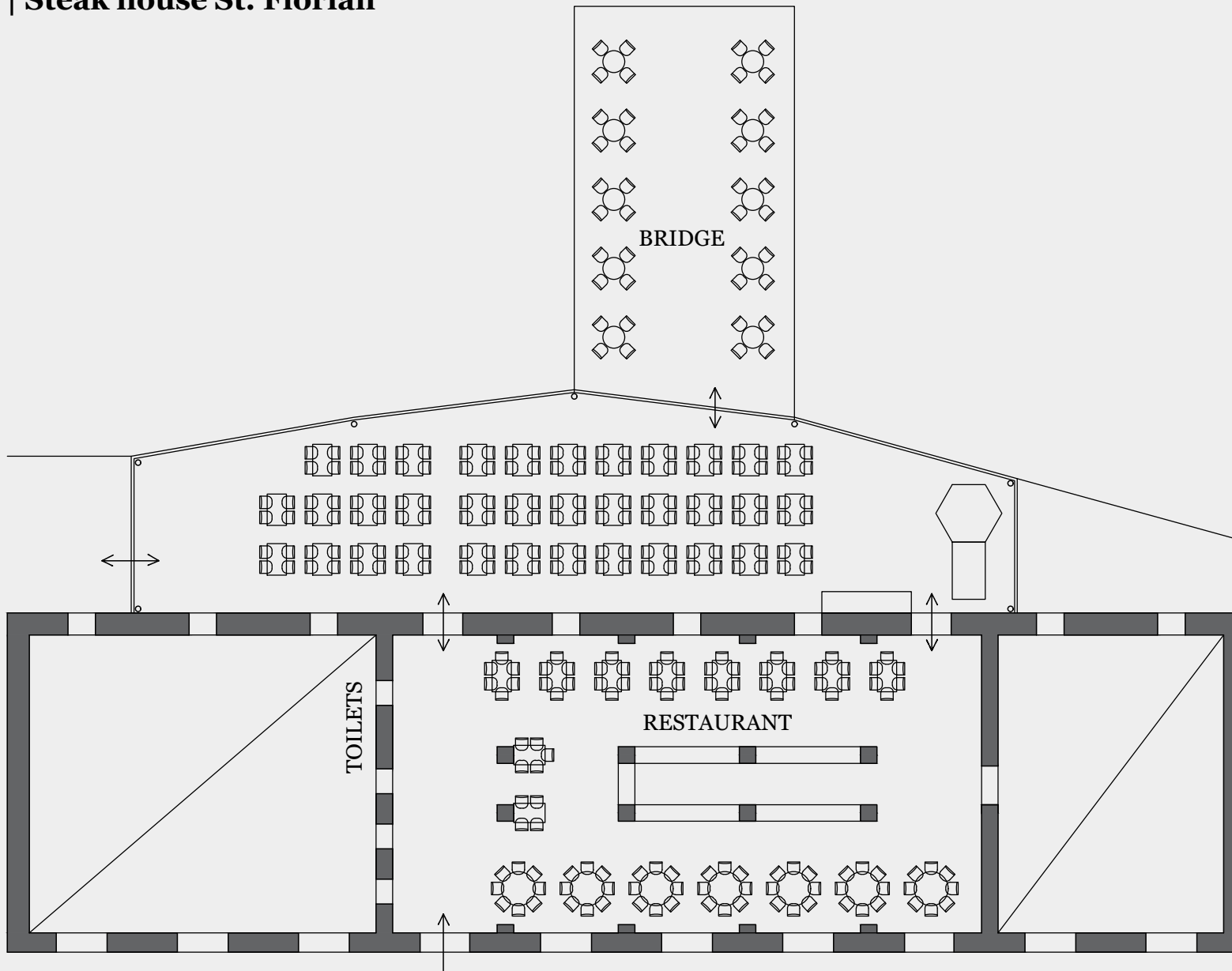


**200 people  
(TERRACE)**



**70 people  
(TAVERN)**

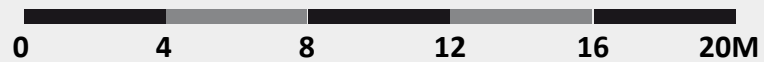
**| Steak house St. Florian**



**120 people  
(RESTAURANT)**



**180 people  
(ROOFED  
TERRACE)**





## | ACCOMODATION

A hotel with a year-round operation is situated directly in the heart of the resort. In several buildings it offers 135 comfortable two-bed rooms. Parking as well as unlimited access to wellness area is included in the price of the accommodation.





## | SPA & WELLNESS

Our clients can use both indoor and outdoor swimming pools, a whirlpool, salt bath, Kneipp path, steam room, sauna or sunsky. It is possible to take various beautifying, curing or relaxing procedures, such as massages, packs, inhalations or baths. There is also a training room prepared for clients and a fitness hall available for groups.





## | ACCOMPANYING ACTIVITIES

Within the framework of corporate events we offer also other accompanying activities, whether directly in the resort or in its vicinity.

This includes especially the following possibilities:

- golf games, including lessons for beginners
- visit of Castle Konopiště situated nearby
- teambuilding activities
- visit and brewery tour in Velké Popovice
- many other activities according to your wishes



We will be glad to prepare a tailor-made offer for organisation of your events and we will show you round our resort. Do not hesitate and contact us.

Petr Kunc | tel.: 317 784 044 | mob. 602 130 688 | p.kunc@gcko.cz  
Golf Konopiště a.s. | Tvoršovice 27, 256 01 Benešov | www.gcko.cz